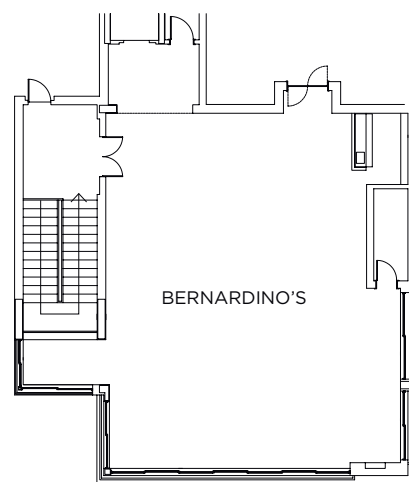




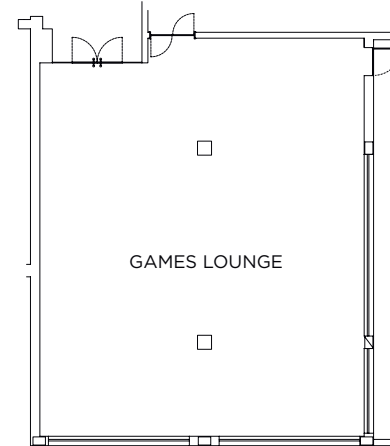
## SALAS DE REUNIÃO MEETING ROOMS

- \_ 8 salas multifuncionais
- \_ Capacidade máxima da maior sala - 380 pax/plateia
- \_ Luz natural em todas as salas
- \_ Aluguer de material audiovisual
- \_ Ligação de internet wireless e de banda larga
- \_ Garagem com 35 lugares

- \_ *8 multifunctional meeting rooms*
- \_ *Maximum capacity of largest room - 380 pax/theatre*
- \_ *Natural light in all rooms*
- \_ *Rental of audiovisual equipment*
- \_ *Wireless internet connection and broadband*
- \_ *Garage with 35 places*

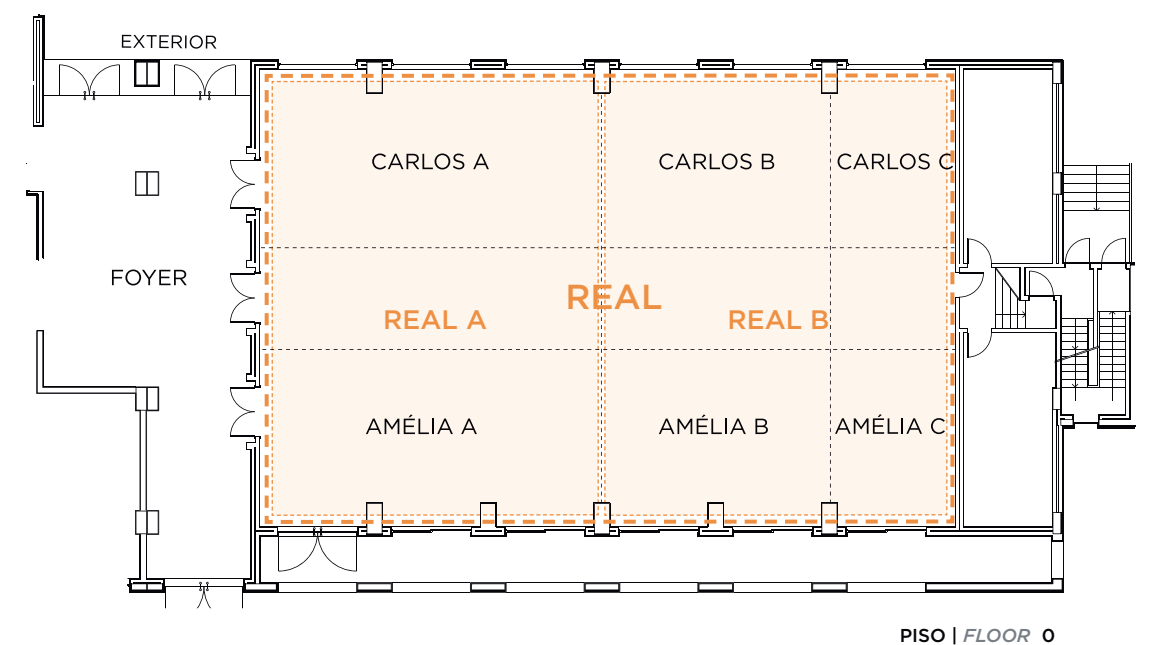


PISO | FLOOR 2



PISO | FLOOR 0

SALAS ROOMS	(CxLxA)   (LxWxH) DIMENSÕES DIMENSIONS	M <sup>2</sup>								
			PLATEIA THEATRE	ESCOLA SCHOOL	EM U U SHAPE	RECEPÇÃO RECEPTION	BANQUETE BANQUET	CABARET CABARET	BUFFET BUFFET	MESA ÚNICA SINGLE TABLE
REAL	22x14,30x2,90	330	380	230	72	500	280	-	240	-
Real A	11,30x14,30x2,90	160	180	120	45	250	120	-	100	-
Real B	11,30x14,30x2,90	160	180	120	51	250	120	-	100	-
D. Carlos A	11,30x6,40x2,90	70	70	39	24	100	48	-	36	-
D. Carlos B	7,40x6,40x2,90	47	40	36	18	70	24	-	24	-
D. Carlos C	3,90x6,40x2,90	25	12	9	9	-	12	-	12	-
D. Carlos A+B	18,70x6,40x2,90	117	110	75	42	170	72	-	60	-
D. Carlos B+C	11,30x6,40x2,90	72	70	39	24	100	48	-	36	-
D. CARLOS	22,90x6,40x2,90	146	122	84	51	180	84	-	72	-
D. Amélia A	11,30x5,70x2,90	87	70	39	24	100	48	-	36	-
D. Amélia B	7,40x5,70x2,90	57	40	36	18	70	24	-	24	-
D. Amélia C	3,90x5,70x2,90	30	12	9	9	-	12	-	12	-
D. Amélia A+B	22,90x5,70x2,90	177	110	75	42	170	72	-	60	-
D. Amélia B+C	15,50x5,70x2,90	120	70	39	24	100	48	-	36	-
D. AMÉLIA	22,90x5,70x2,90	177	122	84	51	180	84	-	72	-
Bernardino's	10,61x13,27x2,90	126	100	60	30	120	70	-	65	-
Games Lounge	12x10,40x2,90	132	120	75	45	150	80	-	70	-



PISO | FLOOR 0